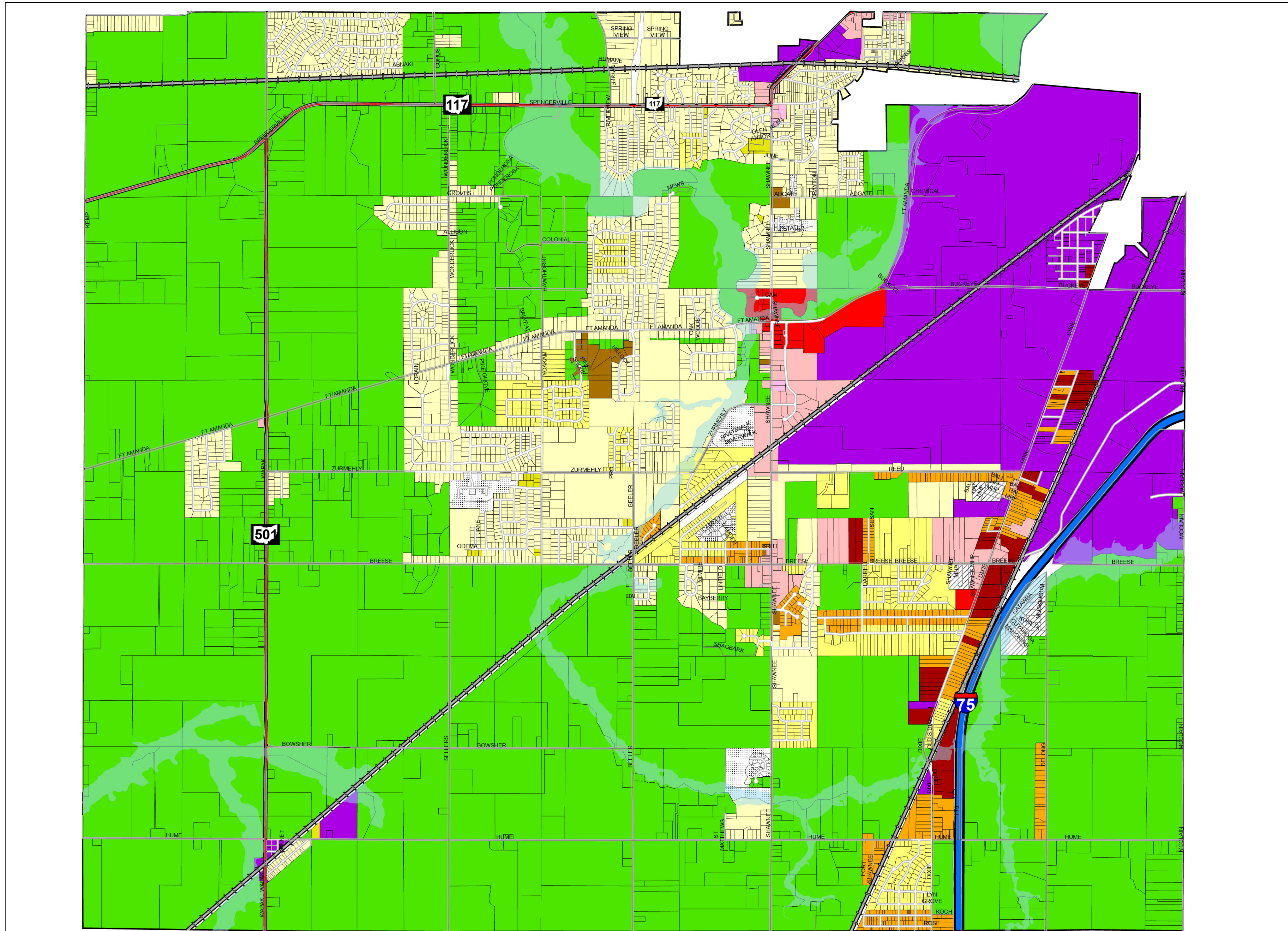
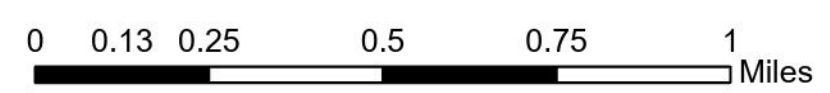


# SHAWNEE TOWNSHIP ZONING MAP



Resolution	Section	Description/Case Number	Date Effective	Updated By	Approved By
10-14	14	SW 1/4 Of SW 1/4 Of Section 14	2/12/2014	JS	DB,CS,RH
62-14	16	Nixenbaugh Subdivision (SH - 1 - 13)	7/23/2014	JS	DB,CS,RH
62-14	16	Highland Greens (SH - 2 - 13)	7/23/2014	JS	DB,CS,RH
62-14	16	Amanda Woods Subdivision No 1 (SH - 3 - 13)	7/23/2014	JS	DB,CS,RH
62-14	16	Wyandot Heights Subdivision No 2 (SH - 4 - 13)	7/23/2014	JS	DB,CS,RH
62-14	15	Wyandot Heights Subdivision (SH - 5 - 13)	7/23/2014	JS	DB,CS,RH
62-14	15	Wyandot Heights Subdivision No 3 (SH - 6 - 13)	7/23/2014	JS	DB,CS,RH
62-14	15	Wyandot Heights Subdivision No 4 (SH - 7 - 13)	7/23/2014	JS	DB,CS,RH
62-14	15	Wyandot Heights No. 4 Replat (SH - 8 - 13)	7/23/2014	JS	DB,CS,RH
62-14	15	Wyandot Heights Subdivision No 5 (SH - 9 - 13)	7/23/2014	JS	DB,CS,RH
62-14	15	Wyandot Heights Subdivision No 6 (SH - 10 - 13)	7/23/2014	JS	DB,CS,RH
62-14	15	Pocahontas Trail (SH - 11 - 13)	7/23/2014	JS	DB,CS,RH
62-14	15	Shawnee Hills No.1 (SH - 12 - 13)	7/23/2014	JS	DB,CS,RH
62-14	15	Shawnee Hills No 2 (SH - 13 - 13)	7/23/2014	JS	DB,CS,RH
62-14	15	Shawnee Hills No 3 (SH - 14 - 13)	7/23/2014	JS	DB,CS,RH
62-14	15	Shingleecker Subdivision (SH - 15 - 13)	7/23/2014	JS	DB,CS,RH
62-14	15	Evergreen Meadows Subdivision (SH - 16 - 13)	7/23/2014	JS	DB,CS,RH
62-14	15	Evergreen Meadows 2nd Addition (SH - 17 - 13)	7/23/2014	JS	DB,CS,RH
62-14	15	Elmview (SH - 18 - 13)	7/23/2014	JS	DB,CS,RH
62-14	15	Elmview Subdivision No 2 (SH - 19 - 13)	7/23/2014	JS	DB,CS,RH
62-14	15	Elmview Subdivision No.2 (SH - 20 - 13)	7/23/2014	JS	DB,CS,RH
62-14	15	Elmview Subdivision No 4 (SH - 21 - 13)	7/23/2014	JS	DB,CS,RH
62-14	15	Shawnee Heights (SH - 22 - 13)	7/23/2014	JS	DB,CS,RH
62-14	16	Part Of N 1/2 Of NE 1/4 Of NW 1/4 Section 16 (SH - 23 - 13)	7/23/2014	JS	DB,CS,RH
62-14	16	Part Of NE 1/4 Section 16 (SH - 24 - 13)	7/23/2014	JS	DB,CS,RH
62-14	16	Part Of SE 1/4 Of SW 1/4 Of NE 1/4 Section 16 (SH - 25 - 13)	7/23/2014	JS	DB,CS,RH
62-14	15	Part Of W 1/2 Of NW 1/4 Section 16 (SH - 26 - 13)	7/23/2014	JS	DB,CS,RH
62-14	15	Part Of W 1/2 Of Section 15 (SH - 27 - 13)	7/23/2014	JS	DB,CS,RH
62-14	15	Part Of Section 15 (SH - 28 - 13)	7/23/2014	JS	DB,CS,RH
62-14	15	Part Of SW 1/4 Of SW 1/4 Section 15 (SH - 29 - 13)	7/23/2014	JS	DB,CS,RH
62-14	15	Part Of S 1/2 Of SE 1/4 Section 15 (SH - 30 - 13)	7/23/2014	JS	DB,CS,RH
62-14	22	Spyker Subdivision (SH - 31 - 13)	7/23/2014	JS	DB,CS,RH
62-14	22	Spyker Subdivision No 2 (SH - 32 - 13)	7/23/2014	JS	DB,CS,RH
62-14	22	Bunko Estates No 2 (SH - 33 - 13)	7/23/2014	JS	DB,CS,RH
62-14	22	Shawnee Lanes (SH - 34 - 13)	7/23/2014	JS	DB,CS,RH
62-14	22	Shawnee Lanes No 2 (SH - 35 - 13)	7/23/2014	JS	DB,CS,RH
62-14	22	Shawnee Lanes No 3 (SH - 36 - 13)	7/23/2014	JS	DB,CS,RH
62-14	22	Part Of E 1/2 Of Section 22 (SH - 37 - 13)	7/23/2014	JS	DB,CS,RH
62-14	27	Part Of E 1/2 Of Section 27 (SH - 38 - 13)	7/23/2014	JS	DB,CS,RH
62-14	9	Part Of W 1/2 Of SW 1/4 Of SE 1/4 Of Section 27 (SH - 39 - 13)	7/23/2014	JS	DB,CS,RH
62-14	25	All Of Section 25 (SH - 40 - 13)	7/23/2014	JS	DB,CS,RH
62-14	26	Highway Heights (SH - 41 - 13)	7/23/2014	JS	DB,CS,RH
62-14	26	Shawnee Oaks Subdivision (SH - 42 - 13)	7/23/2014	JS	DB,CS,RH
62-14	26	Shawnee Oaks Subdivision No 2 (SH - 43 - 13)	7/23/2014	JS	DB,CS,RH
62-14	26	Shawnee Oaks Subdivision No 3 (SH - 44 - 13)	7/23/2014	JS	DB,CS,RH
62-14	26	Shawnee Oaks Subdivision No 4 (SH - 45 - 13)	7/23/2014	JS	DB,CS,RH
62-14	26	Shawnee Oaks Subdivision No 5 (SH - 46 - 13)	7/23/2014	JS	DB,CS,RH
62-14	26	Koch's First Subdivision (SH - 47 - 13)	7/23/2014	JS	DB,CS,RH
62-14	26	Arthur's First Addition (SH - 48 - 13)	7/23/2014	JS	DB,CS,RH
62-14	26	Fryer's 1st Subdivision (SH - 49 - 13)	7/23/2014	JS	DB,CS,RH
62-14	26	Fryer's Second Subdivision (SH - 50 - 13)	7/23/2014	JS	DB,CS,RH
62-14	26	Nonplatted Section Ground Of Section 26 (SH - 51 - 13)	7/23/2014	JS	DB,CS,RH
62-14	23	Lilac Woods Subdivision (SH - 52 - 13)	7/23/2014	JS	DB,CS,RH
62-14	23	Lilac Woods 2nd Addition (SH - 53 - 13)	7/23/2014	JS	DB,CS,RH
62-14	23	Southgate Addition (SH - 54 - 13)	7/23/2014	JS	DB,CS,RH
62-14	23	Southgate Addition No 2 (SH - 55 - 13)	7/23/2014	JS	DB,CS,RH
62-14	23	Southgate Addition No 3 (SH - 56 - 13)	7/23/2014	JS	DB,CS,RH
62-14	23	Leffler Subdivision (SH - 57 - 13)	7/23/2014	JS	DB,CS,RH
62-14	23	OB Frair's First Addition (SH - 58 - 13)	7/23/2014	JS	DB,CS,RH
62-14	23	OB Frair's Second Addition (SH - 59 - 13)	7/23/2014	JS	DB,CS,RH
62-14	23	OB Frair's Third Addition (SH - 60 - 13)	7/23/2014	JS	DB,CS,RH
62-14	23	OB Frair's Fourth Addition (SH - 61 - 13)	7/23/2014	JS	DB,CS,RH
62-14	23	Burden Subdivision (SH - 62 - 13)	7/23/2014	JS	DB,CS,RH
62-14	23	Dixie Farms (SH - 63 - 13)	7/23/2014	JS	DB,CS,RH
62-14	23	Nonplatted Section Ground Of Section 23 (SH - 64 - 13)	7/23/2014	JS	DB,CS,RH
62-14	24	Crow Haven Subdivision No 1 (SH - 65 - 13)	7/23/2014	JS	DB,CS,RH
62-14	24	Nonplatted Section Ground Of Section 24 (SH - 66 - 13)	7/23/2014	JS	DB,CS,RH
62-14	14	Kenleen Acres Subdivision (SH - 67 - 13)	7/23/2014	JS	DB,CS,RH
62-14	14	Max F & Floasia Fleischman Subdivision (SH - 68 - 13)	7/23/2014	JS	DB,CS,RH
62-14	14	Freyer's Third Subdivision (SH - 69 - 13)	7/23/2014	JS	DB,CS,RH
62-14	14	S 1/2 Of Nonplatted Section Ground Of Section 14 (SH - 70 - 13)	7/23/2014	JS	DB,CS,RH
62-14	13	Royal Oaks (SH - 71 - 13)	7/23/2014	JS	DB,CS,RH
62-14	13	Twin Oaks Addition (SH - 72 - 13)	7/23/2014	JS	DB,CS,RH
62-14	13	Simkin Farm (SH - 73 - 13)	7/23/2014	JS	DB,CS,RH
62-14	13	Nonplatted Section Ground Of Section 13 (SH - 74 - 13)	7/23/2014	JS	DB,CS,RH
62-14	12	Zurmeily Re-Subdivision (SH - 75 - 13)	7/23/2014	JS	DB,CS,RH
62-14	12	S 1/2 Of Section 12 (SH - 76 - 13)	7/23/2014	JS	DB,CS,RH
88-15	8	Meadowlands Subdivision 1 & 2 (SH - 01 - 15)	8/27/2015	JS	DB,CS,RH
88-15	8	Fond View Estates (SH - 02 - 15)	8/27/2015	JS	DB,CS,RH
88-15	16	Amanda Lakes 2,3 & 4 (SH - 03 - 15)	8/27/2015	JS	DB,CS,RH
88-15	22	Fox Run Estates (SH - 04 - 15)	8/27/2015	JS	DB,CS,RH
88-15	10	Breezewood Estates (SH - 05 - 15)	8/27/2015	JS	DB,CS,RH
88-15	9	Fairwood Estates (SH - 06 - 15)	8/27/2015	JS	DB,CS,RH
88-15	3	Timberland 2 & 3 (SH - 07 - 15)	8/27/2015	JS	DB,CS,RH
88-18	8	Wonderlick Road Ag to R-1 (SH-05-18)	8/8/2018	DM	DB,CS,CS
27-21	16	Gaitherburg & Alexandria Dr. R-3 to R-1 (SH-02-21)	4/12/2021	DM	CS, DB, RH
99-21	16	Monticello Subdivision lot #29801 (SH-02-21) R-III to R-I	12/27/2021	AH	DB, CS, RH
69-22	15	Camden Ridge PUD to R-1W (SH-01-22)	4/25/2022	DM	RH, CS
51-24	23	Whitson Properties, LLC	5/9/2024	DM	CS,JR,TC

- Zoning District
- A: Agricultural District
  - B-I: Business District
  - B-II: Business District
  - B-III: Business District
  - B-IV: Business District
  - I: Industrial District
  - MHP: Manufactured Home Park District
  - R-1: Residential District
  - R-1H: Residential District
  - R-II: Residential District
  - R-III: Residential District
  - R-III: Residential District
  - Floodplain
  - PUD: Planned Unit Development



April 21, 2024

Approved by the Shawnee Township Board of Trustees

\_\_\_\_\_  
Chairman

\_\_\_\_\_  
Vice Chairperson

\_\_\_\_\_  
Trustee

\_\_\_\_\_  
Date

\_\_\_\_\_  
Date

\_\_\_\_\_  
Date